



India Meteorological Department
Earth System Science Organisation
(Ministry of Earth Sciences)

BULLETIN NO. : 04 (BOB 07/2017)

TIME OF ISSUE: 0130 HOURS IST

DATED: 30.11.2017

FROM: INDIA METEOROLOGICAL DEPARTMENT (FAX NO. 24643965/24699216/24623220)

TO: CONTROL ROOM, NDM, MINISTRY OF HOME AFFAIRS (FAX.NO. 23093750)

CONTROL ROOM NDMA (FAX.NO. 26701729)

CABINET SECRETARIAT (FAX.NO.23012284)

PS TO HON'BLE MINISTER FOR S & T AND EARTH SCIENCES (FAX NO.23316745)

SECRETARY, MOES, (FAX NO. 24629777)

SECRETARY, DST (FAX NO. 26863847/-2418)

H.Q. (INTEGRATED DEFENCE STAFF AND CDS) (FAX NO. 23005137/23005147)

DIRECTOR GENERAL, DOORDARSHAN (23385843)

DIRECTOR GENERAL, AIR (25843825)

PIB MOES (FAX NO. 23389042)

UNI (FAX NO. 23355841)

D.G. NATIONAL DISASTER RESPONSE FORCE (NDRF) (FAX NO. 26105912)

CHIEF SECRETARY, GOVT.OF KERALA (FAX NO. 0471-2518006)

CHIEF SECRETARY, GOVT.OF TAMIL NADU ((FAX NO. 044-25672304)

CHIEF ADMINISTRATOR, LAKHADWEEP ISLANDS (FAX NO. 04896-262184)

CHIEF SECRETARY, GOVT.OF PUDUCHERRY (FAX NO. 0413-2337575)

DIRECTOR, PUNCTUALITY, INDIAN RAILWAYS (FAX NO. 23388503)

Sub: Depression over Comorin area and neighbourhood

Latest observations and satellite imageries indicate that the depression over Comorin area and adjoining Sri Lanka moved nearly westward with a speed of 15 kmph during last 6 hours and lay centred at 2330 hrs IST of yesterday, the 29th November, 2017 over Comorin area and neighbourhood near Latitude 6.3° N and Longitude 79.2° E, about 110 km northwest of Galle (Sri Lanka) and 270 km southeast of Kanyakumari. The system is very likely to move nearly westwards and intensify further into a deep depression during next 12 hours.

Warning:

(i) Heavy Rainfall warning:

- Rainfall at most places with Heavy to very heavy rainfall at isolated places very likely over south Tamil Nadu during next 36 hours.
- Rainfall at most places with heavy rainfall at isolated places very likely over south Kerala during next 12 hours and isolated heavy to very heavy rainfall during subsequent 24 hours.
- Rainfall at most places with Heavy to very heavy rainfall at isolated places very likely over Lakshadweep islands on 1st and 2nd December.

(ii) Wind warning:

- Squally winds reaching 45-55 kmph gusting to 65 kmph is very likely along and off South Tamil Nadu and South Kerala during next 36 hours and over Lakshadweep Islands and adjoining sea areas on 01st and 02nd December.

(ii) Sea condition: Sea conditions would be rough to very rough along & off South Tamil Nadu and South Kerala during next 36 hours and over Lakshadweep Islands and adjoining sea areas on 01st and 02nd December.

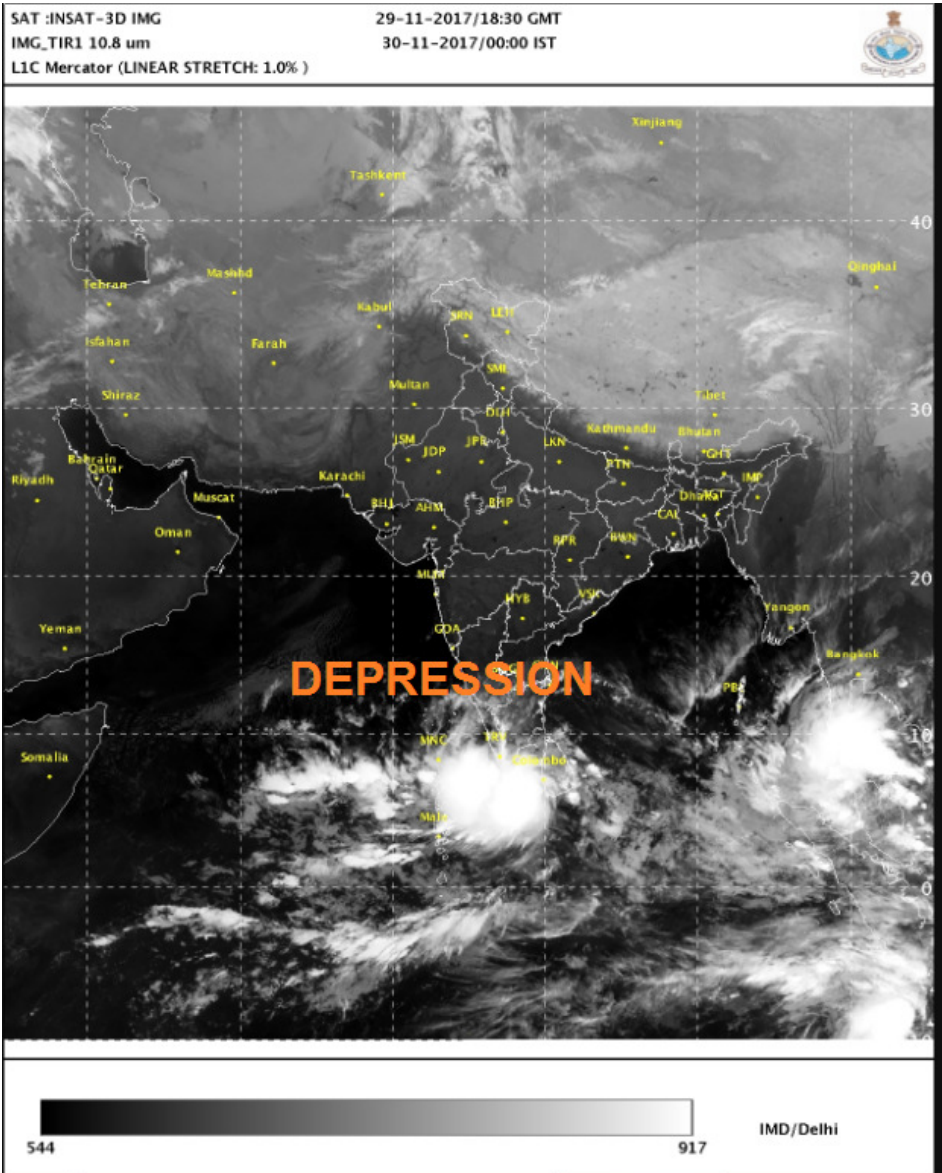
(iii) Fishermen Warning: Fishermen along & off South Tamil Nadu and South Kerala coasts are advised not to venture into sea during next 36 hours and along and off Lakshadweep Islands are advised not to venture into the sea on 01st and 02nd December.

The next bulletin will be issued at 0830 hrs IST of 30th November 2017.

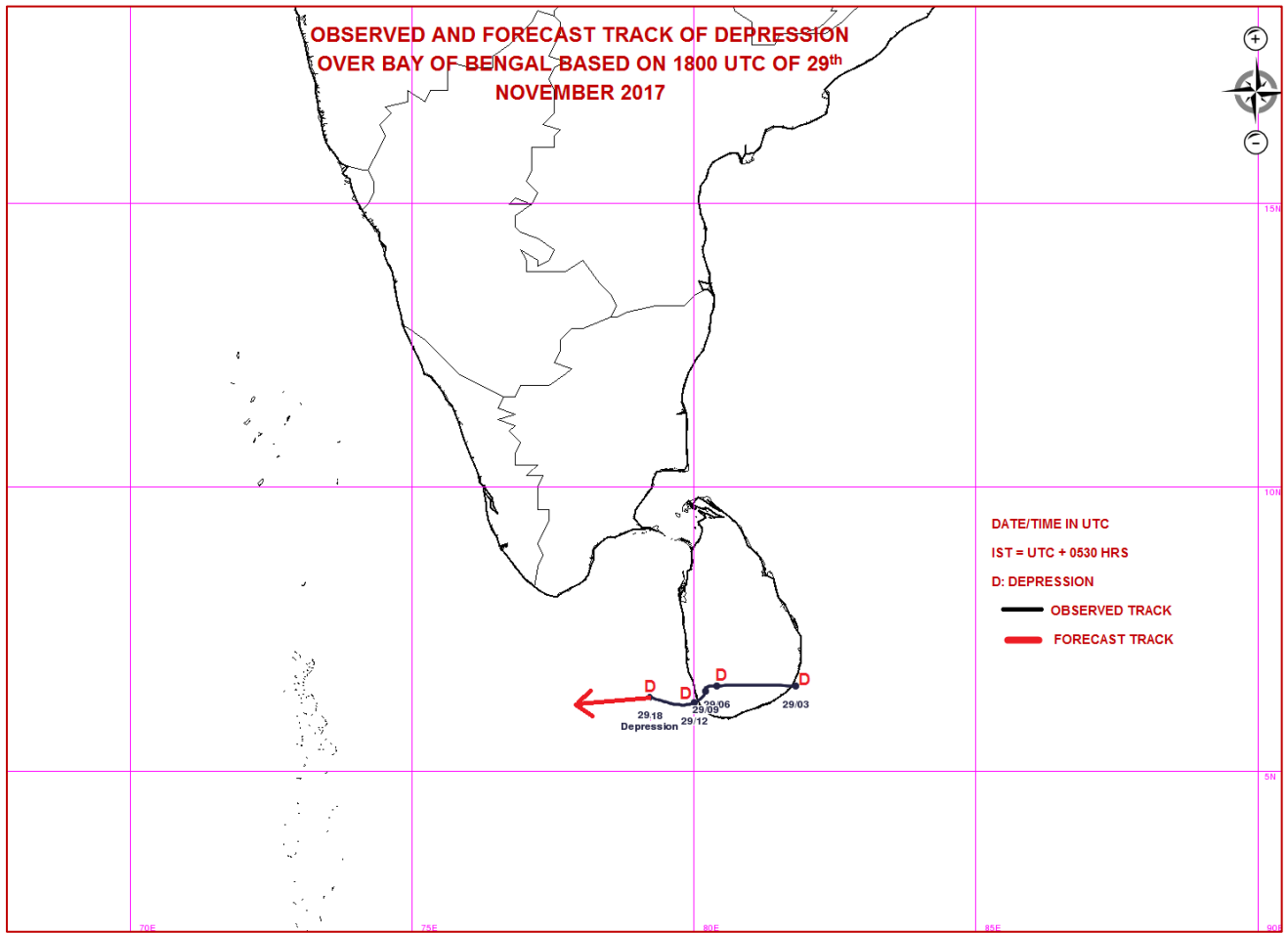
(Krishna Mishra)
Scientist-B, RSMC, New Delhi

Copy to: CRS, Pune/ ACWC Chennai/ MC Thiruvananthapuram/ MC Begaluru.

Spatial rainfall distribution: Isolated: <25%, A few: 26-50%, Many: 51-75%, Most: 76-100%
Rainfall amount (mm): Heavy rain: 64.5 – 115.5, Very heavy rain: 115.6 – 204.4, Extremely heavy rain: 204.5 or more.



Spatial rainfall distribution: Isolated: <25%, A few: 26-50%, Many: 51-75%, Most: 76-100%
Rainfall amount (mm): Heavy rain: 64.5 – 115.5, Very heavy rain: 115.6 – 204.4, Extremely heavy rain: 204.5 or more.



Spatial rainfall distribution: Isolated: <25%, A few: 26-50%, Many: 51-75%, Most: 76-100%
Rainfall amount (mm): Heavy rain: 64.5 – 115.5, Very heavy rain: 115.6 – 204.4, Extremely heavy rain: 204.5 or more.