



**India Meteorological Department
Earth System Science Organisation
(Ministry of Earth Sciences)**

BULLETIN NO. : 06 (BOB 07/2017)

TIME OF ISSUE: 0830 HOURS IST

DATED: 30.11.2017

FROM: INDIA METEOROLOGICAL DEPARTMENT (FAX NO. 24643965/24699216/24623220)

**TO: CONTROL ROOM, NDM, MINISTRY OF HOME AFFAIRS (FAX.NO. 23093750)
CONTROL ROOM NDMA (FAX.NO. 26701729)
CABINET SECRETARIAT (FAX.NO.23012284)
PS TO HON'BLE MINISTER FOR S & T AND EARTH SCIENCES (FAX NO.23316745)
SECRETARY, MOES, (FAX NO. 24629777)
SECRETARY, DST (FAX NO. 26863847/-2418)
H.Q. (INTEGRATED DEFENCE STAFF AND CDS) (FAX NO. 23005137/23005147)
DIRECTOR GENERAL, DOORDARSHAN (23385843)
DIRECTOR GENERAL, AIR (25843825)
PIB MOES (FAX NO. 23389042)
UNI (FAX NO. 23355841)
D.G. NATIONAL DISASTER RESPONSE FORCE (NDRF) (FAX NO. 26105912)
CHIEF SECRETARY, GOVT.OF KERALA (FAX NO. 0471-2518006)
CHIEF SECRETARY, GOVT.OF TAMIL NADU ((FAX NO. 044-25672304)
CHIEF ADMINISTRATOR, LAKHADWEEP ISLANDS (FAX NO. 04896-262184)
CHIEF SECRETARY, GOVT.OF PUDUCHERRY (FAX NO. 0413-2337575)
DIRECTOR, PUNCTUALITY, INDIAN RAILWAYS (FAX NO. 23388503)**

Sub: Deep Depression over Comorin area & Cyclone Alert for Lakshadweep Islands

Latest observations and satellite imageries indicate that the deep depression over Comorin area moved west-northwestwards with a speed of 18 kmph during past 06 hours and lay centred at 0530 hrs IST of today, the 30th November, 2017 over Comorin area and neighbourhood near Latitude 6.7° N and Longitude 78.3° E, about 240 km west-northwest of Galle (Sri Lanka), 170 km southeast of Kanyakumari and 600 km east-southeast of Minicoy. The system is very likely to move west-northwestwards and intensify further into a cyclonic storm during next 12 hours.

Date/Time(IST)	Position (Lat. °N/ long. °E)	Maximum sustained surface wind speed (kmph)	Category of cyclonic disturbance
30/0530	6.7/78.3	50-60 GUSTING TO 70	DEEP DEPRESSION
30/1130	7.0/77.5	55-65 GUSTING TO 75	DEEP DEPRESSION
30/1730	7.4/76.7	60-70 GUSTING TO 80	CYCLONIC STORM
30/2330	7.8/75.8	70-80 GUSTING TO 90	CYCLONIC STORM
01/0530	8.2/75.0	80-90 GUSTING TO 100	CYCLONIC STORM
01/1730	9.2/73.5	90-100 GUSTING TO 110	SEVERE CYCLONIC STORM
02/0530	10.2/72.0	95-105 GUSTING TO 115	SEVERE CYCLONIC STORM
02/1730	11.2/70.5	100-110 GUSTING TO 120	SEVERE CYCLONIC STORM
03/0530	12.2/69.0	110-120 GUSTING TO 130	SEVERE CYCLONIC STORM

Warning:

(i) Heavy Rainfall warning:

- Rainfall at most places with heavy to very heavy rainfall at isolated places very likely over south Tamil Nadu & south Kerala during next 24 hours and isolated heavy falls during subsequent 24 hours.
- Rainfall at most places with heavy to very heavy rainfall at a few places and isolated extremely heavy falls very likely over Lakshadweep area during next 48 hours.

(ii) Wind warning:

- Squally winds reaching 55-65 kmph gusting to 75 kmph very likely along & off South Kerala during next 48 hours and along & off south Tamilnadu during next 24 hours.

Spatial rainfall distribution: Isolated: <25%, A few: 26-50%, Many: 51-75%, Most: 76-100%

Rainfall amount (mm): Heavy rain: 64.5 – 115.5, Very heavy rain: 115.6 – 204.4, Extremely heavy rain: 204.5 or more.

- Squally winds speed reaching 55-65 kmph gusting to 75 kmph very likely along & around Lakshadweep Islands during next 24 hours and gradual increase in wind speed becoming 70-80 kmph gusting to 90 kmph during subsequent 24 hours.

(ii) **Sea condition:**

- Sea conditions would be very rough to high along & off South Kerala during next 48 hours and along & off south Tamilnadu during next 24 hours.
- Sea conditions would be very rough to high along & around Lakshadweep Islands during next 24 hours and high during subsequent 24 hours.

(iii) **Damage Expected over Lakshadweep Islands:** Damage to power and communication lines due to breaking of tree branches and uprooting of trees. Damage to thatched houses: Major damage to kutch houses and minor damage to pucca roads. Damage to paddy crops, banana, Papaya trees and orchards

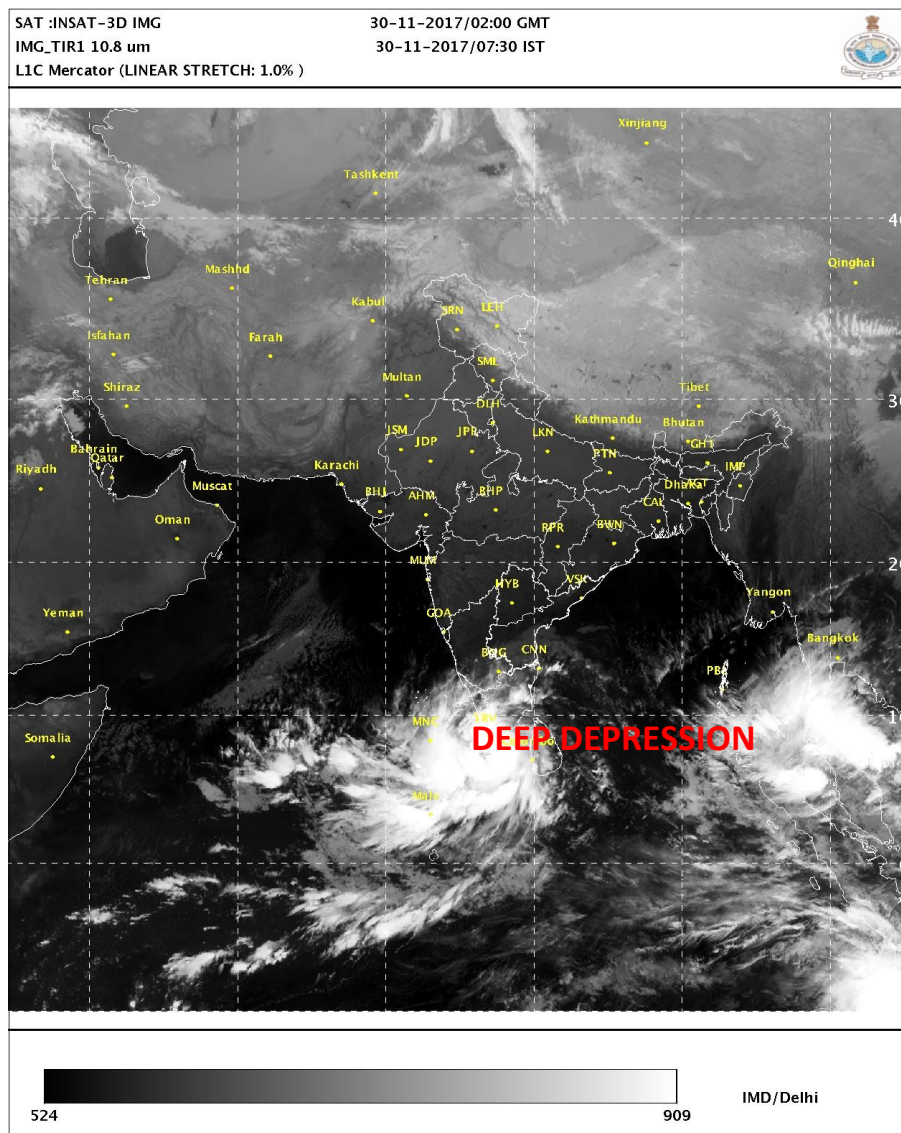
(iv) **Action suggested**

- **Lakshadweep Islands:** Fishermen along & off Lakshadweep Islands are advised not to venture into the sea during next 48 hours.
- **South Tamil Nadu and South Kerala :** Fishermen are advised not to venture into the sea along & off South Tamil Nadu coast during next 24 hrs and along and off South Kerala coasts during next 48 hours.

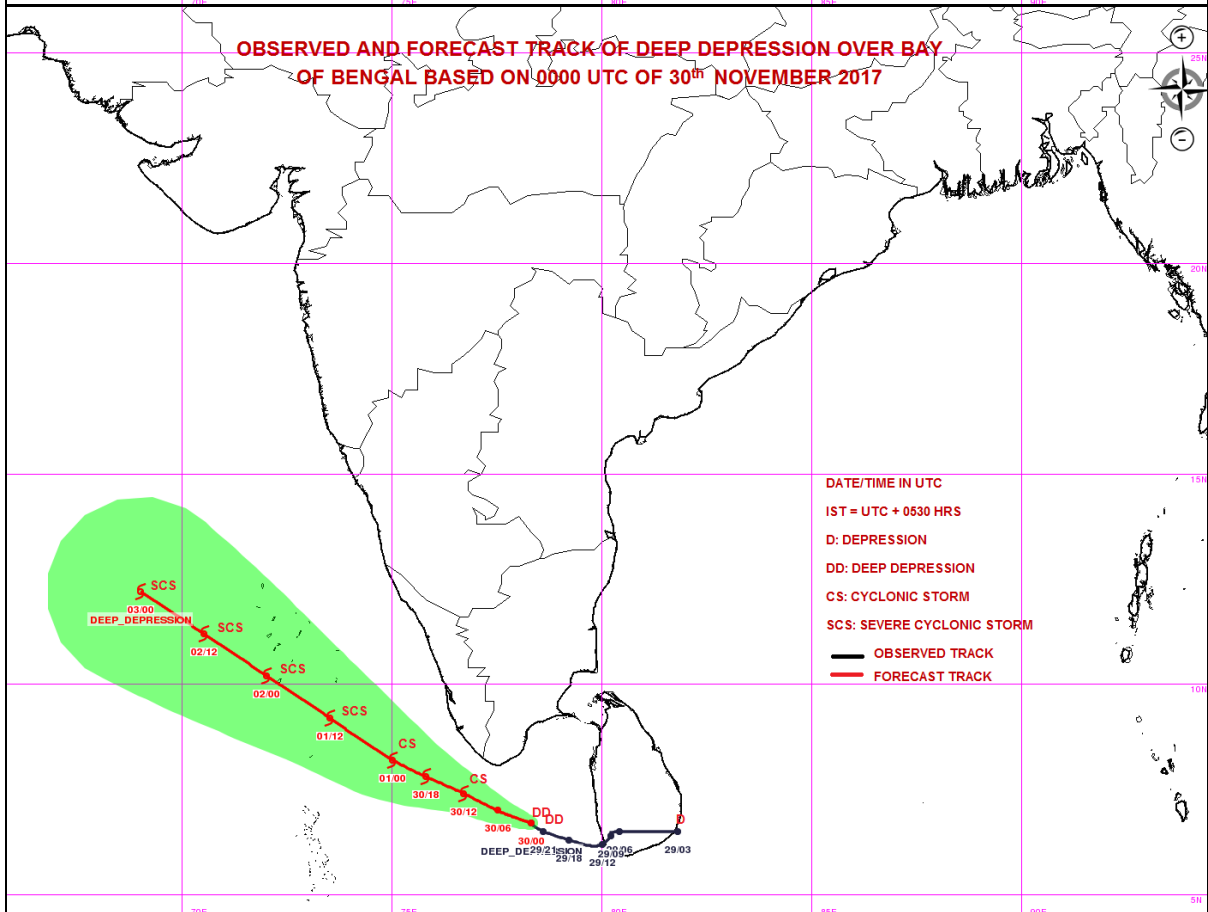
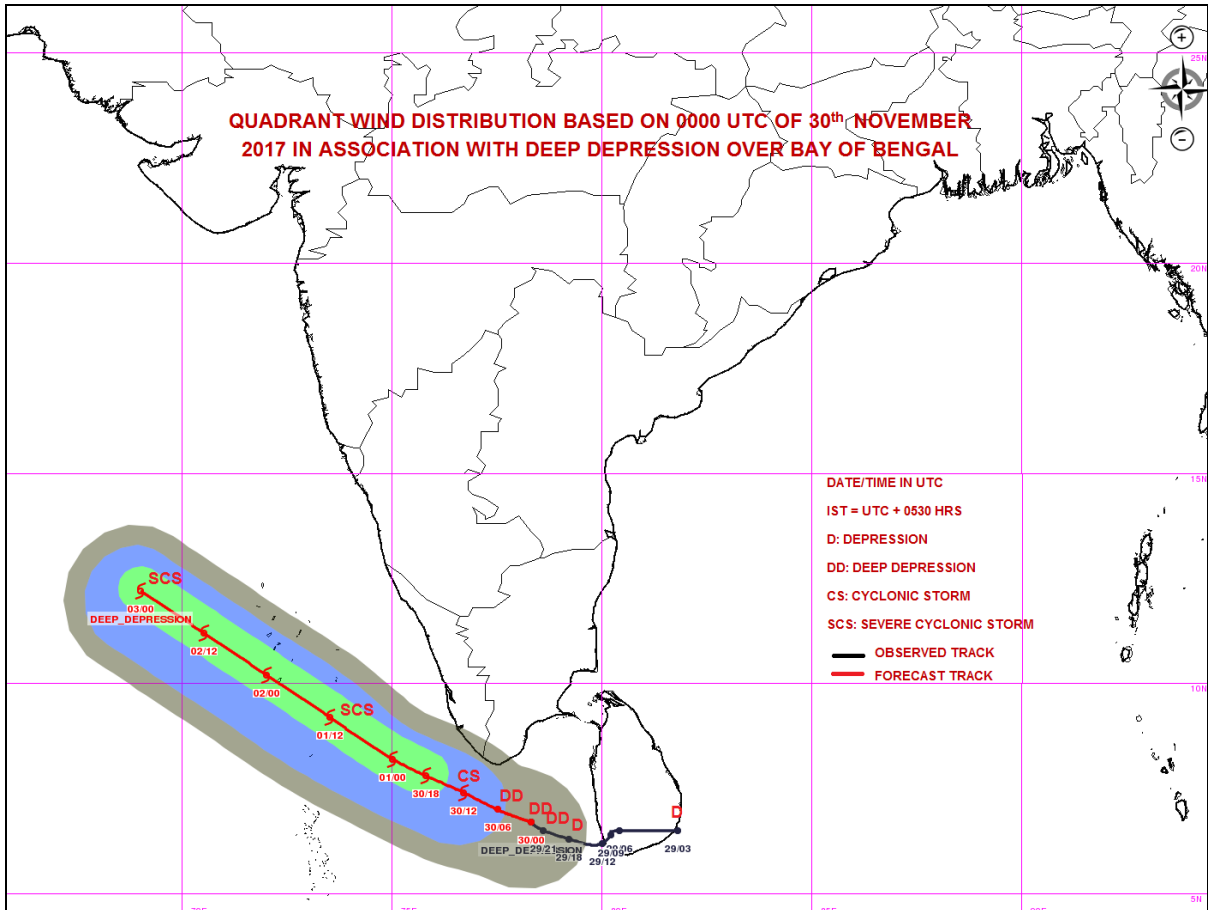
The next bulletin will be issued at 1130 hrs IST of 30th November 2017.

(Krishna Mishra)
Scientist-B, RSMC, New Delhi

Copy to: CRS, Pune/ ACWC Chennai/ MC Thiruvananthapuram/ MC Begaluru.



Spatial rainfall distribution: Isolated: <25%, A few: 26-50%, Many: 51-75%, Most: 76-100%
Rainfall amount (mm): Heavy rain: 64.5 – 115.5, Very heavy rain: 115.6 – 204.4, Extremely heavy rain: 204.5 or more.



Spatial rainfall distribution: Isolated: <25%, A few: 26-50%, Many: 51-75%, Most: 76-100%
Rainfall amount (mm): Heavy rain: 64.5 – 115.5, Very heavy rain: 115.6 – 204.4, Extremely heavy rain: 204.5 or more.

Spatial rainfall distribution: Isolated: <25%, A few: 26-50%, Many: 51-75%, Most: 76-100%
Rainfall amount (mm): Heavy rain: 64.5 – 115.5, Very heavy rain: 115.6 – 204.4, Extremely heavy rain: 204.5 or more.