



India Meteorological Department
Earth System Science Organisation
(Ministry of Earth Sciences)

BULLETIN NO. : 07 (BOB 07/2017)

TIME OF ISSUE: 1200 HOURS IST

DATED: 30.11.2017

FROM: INDIA METEOROLOGICAL DEPARTMENT (FAX NO. 24643965/24699216/24623220)

TO: CONTROL ROOM, NDM, MINISTRY OF HOME AFFAIRS (FAX.NO. 23093750)

CONTROL ROOM NDMA (FAX.NO. 26701729)

CABINET SECRETARIAT (FAX.NO.23012284)

PS TO HON'BLE MINISTER FOR S & T AND EARTH SCIENCES (FAX NO.23316745)

SECRETARY, MOES, (FAX NO. 24629777)

SECRETARY, DST (FAX NO. 26863847/-2418)

H.Q. (INTEGRATED DEFENCE STAFF AND CDS) (FAX NO. 23005137/23005147)

DIRECTOR GENERAL, DOORDARSHAN (23385843)

DIRECTOR GENERAL, AIR (25843825)

PIB MOES (FAX NO. 23389042)

UNI (FAX NO. 23355841)

D.G. NATIONAL DISASTER RESPONSE FORCE (NDRF) (FAX NO. 26105912)

CHIEF SECRETARY, GOVT.OF KERALA (FAX NO. 0471-2518006)

CHIEF SECRETARY, GOVT.OF TAMIL NADU ((FAX NO. 044-25672304)

CHIEF ADMINISTRATOR, LAKHADWEEP ISLANDS (FAX NO. 04896-262184)

CHIEF SECRETARY, GOVT.OF PUDUCHERRY (FAX NO. 0413-2337575)

DIRECTOR, PUNCTUALITY, INDIAN RAILWAYS (FAX NO. 23388503)

Sub: Cyclonic Storm 'OCKHI' over Comorin area & Cyclone Warning for South Kerala, adjoining districts of south Tamil Nadu and Lakshadweep Islands- ORANGE message

Latest observations and satellite imageries indicate that the deep depression over Comorin area moved west-northwestwards with a speed of 38 kmph during past 06 hours and intensified into a cyclonic storm 'OCKHI' and lay centred at 0830 hrs IST of today, the 30th November, 2017 over Comorin area and neighbourhood near Latitude 7.5° N and Longitude 77.5° E, about 340 km west-northwest of Galle (Sri Lanka), 60 km south of Kanyakumari, 120 km southwest of Thiruvananthapuram and 480 km east-southeast of Minicoy. The system is very likely to move west-northwestwards towards Lakshadweep Islands and intensify further into a severe cyclonic storm during next 24 hours.

Date/Time(IST)	Position (Lat. °N/ long. °E)	Maximum sustained surface wind speed (kmph)	Category of cyclonic disturbance
30/0830	7.5/77.5	60-70 GUSTING TO 80	CYCLONIC STORM
30/1130	7.8/77.0	60-70 GUSTING TO 80	CYCLONIC STORM
30/1730	8.5/75.8	70-75 GUSTING TO 85	CYCLONIC STORM
30/2330	9.0/75.0	80-90 GUSTING TO 100	CYCLONIC STORM
01/0830	9.5/74.2	90-100 GUSTING TO 110	SEVERE CYCLONIC STORM
01/1730	10.4/72.7	95-105 GUSTING TO 115	SEVERE CYCLONIC STORM
02/0830	11.4/71.2	100-110 GUSTING TO 120	SEVERE CYCLONIC STORM
02/1730	12.4/69.7	110-120 GUSTING TO 130	SEVERE CYCLONIC STORM

Warning:

(i) Heavy Rainfall warning:

- Rainfall at most places with heavy to very heavy rainfall at isolated places very likely over south Tamil Nadu & south Kerala during next 24 hours and isolated heavy falls over interior Tamil Nadu and Kerala during subsequent 24 hours.
- Rainfall at most places with heavy to very heavy rainfall at a few places and isolated extremely heavy falls very likely over Lakshadweep area during next 48 hours.

(ii) Wind warning:

Spatial rainfall distribution: Isolated: <25%, A few: 26-50%, Many: 51-75%, Most: 76-100%

Rainfall amount (mm): Heavy rain: 64.5 – 115.5, Very heavy rain: 115.6 – 204.4, Extremely heavy rain: 204.5 or more.

- Gale wind speed reaching 65-75 kmph gusting to 85 kmph very likely along & off South Kerala during next 48 hours and along & off south Tamilnadu during next 24 hours.
 - Squally winds speed reaching 55-65 kmph gusting to 75 kmph very likely along & around Lakshadweep Islands during next 12 hours and increase thereafter with wind speeds becoming 80-90 kmph gusting to 100 kmph from tonight, the 30th November 2017.
- (ii) **Sea condition:**
- Sea conditions would be high along & off South Kerala coast during next 48 hours and along & off south Tamilnadu coast during next 24 hours.
 - Sea conditions would be very rough to high over and around Lakshadweep Islands during next 12 hours and high to very high during subsequent 48 hours.
- (iii) **Damage Expected over south Kerala (Alappuzha, Kottayam, Idukki, Kollam, Pathanathitta, Thiruvananthapuram districts), adjoining districts of south Tamil Nadu (Kanyakumari, Tutukudi and Tirunelveli districts) and Lakshadweep Islands:** Damage to power and communication lines due to breaking of tree branches and uprooting of trees. Damage to thatched houses: Major damage to kutcha houses and minor damage to pucca roads. Damage to paddy crops, banana, Papaya trees and orchards.
- (iv) **Action suggested**
- **Lakshadweep Islands:** Fishermen along & off Lakshadweep Islands are advised not to venture into the sea during next 48 hours.
 - **South Tamil Nadu and South Kerala :** Fishermen are advised not to venture into the sea along & off South Tamil Nadu coast during next 24 hrs and along and off South Kerala coasts during next 48 hours.

The next bulletin will be issued at 1430 hrs IST of 30th November 2017.

(Neetha K Gopal)
Scientist-E, RSMC, New Delhi

Copy to: CRS, Pune/ ACWC Chennai/ MC Thiruvananthapuram/ MC Begaluru.

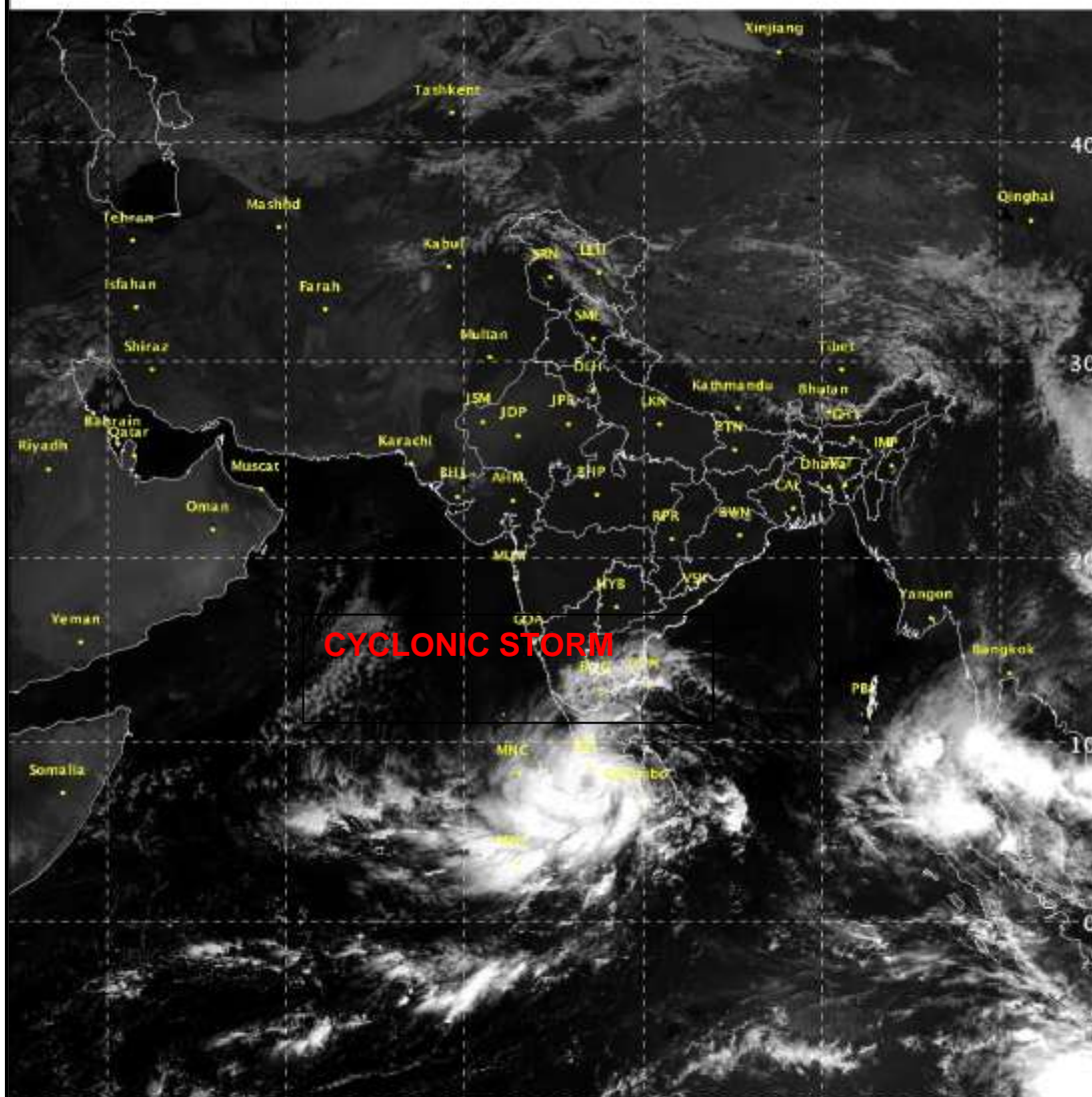
SAT :INSAT-3D IMG

IMG_VIS 0.65 um

LIC Mercator (LINEAR STRETCH: 1.0%)

30-11-2017/05:00 GMT

30-11-2017/10:30 IST

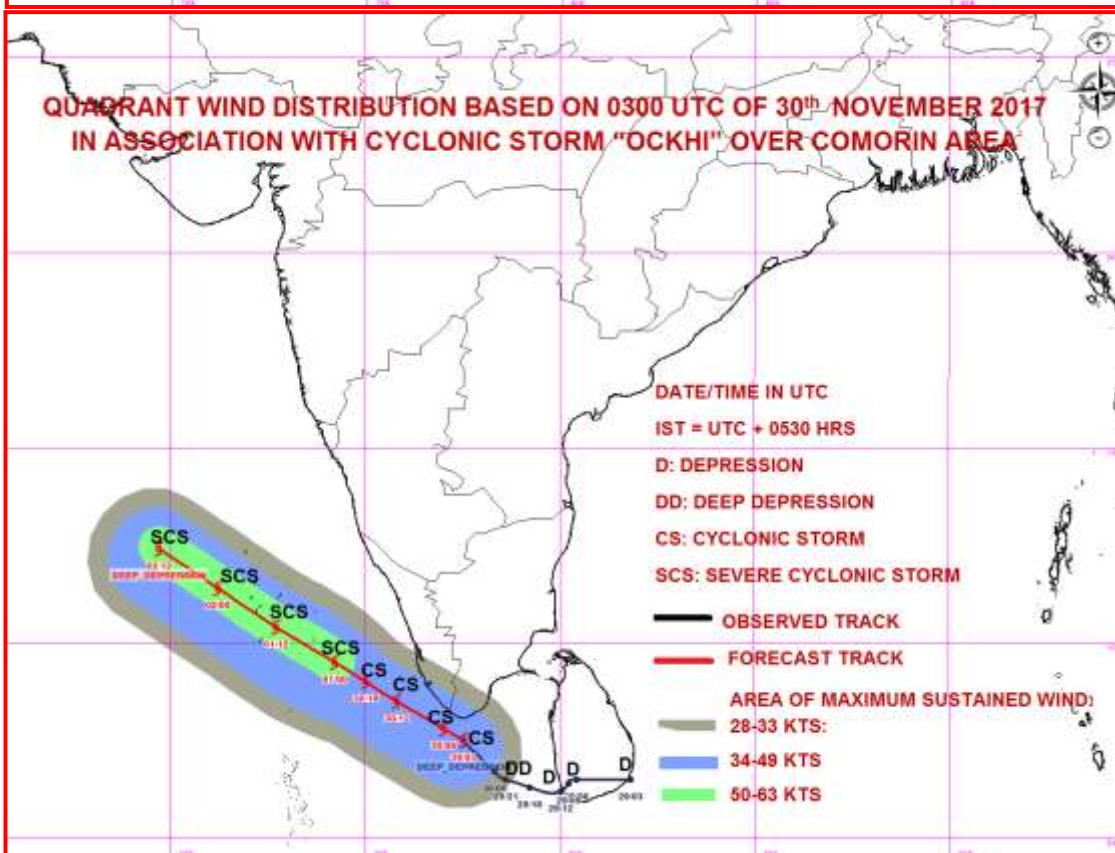
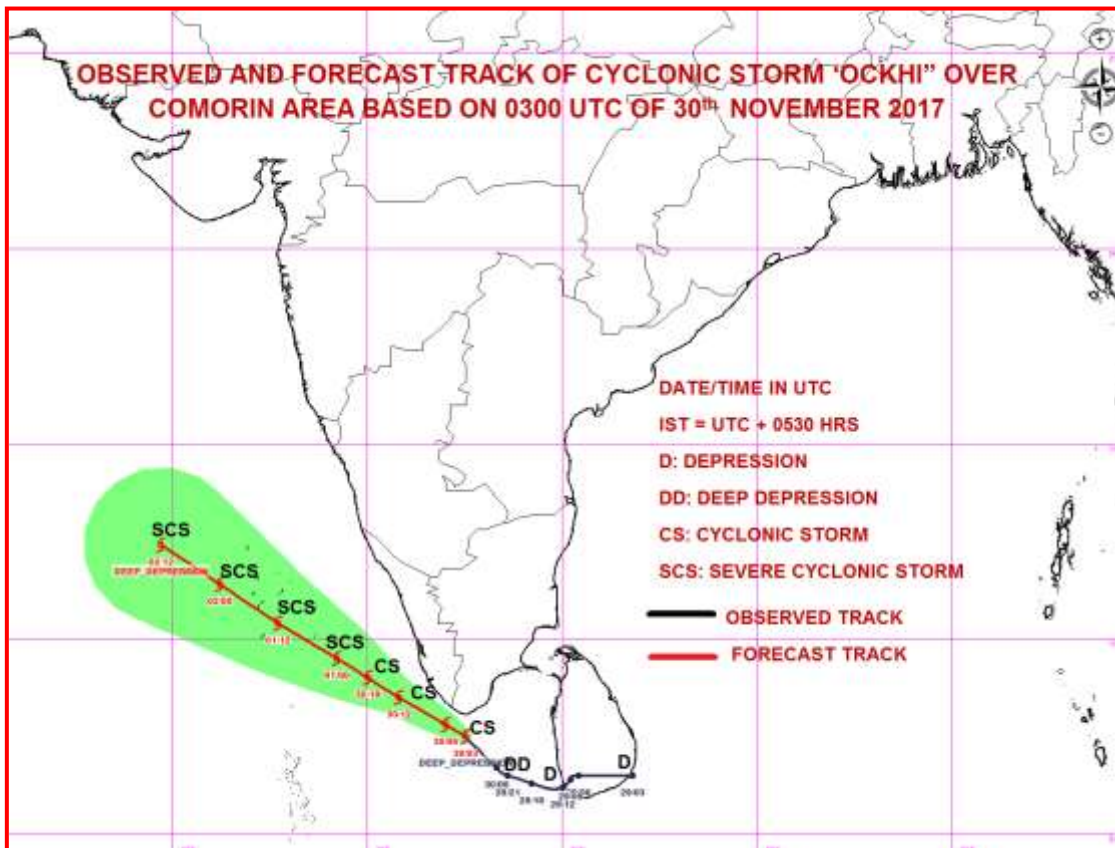


37

421

IMD/Delhi

Spatial rainfall distribution: Isolated: <25%, A few: 26-50%, Many: 51-75%, Most: 76-100%
Rainfall amount (mm): Heavy rain: 64.5 – 115.5, Very heavy rain: 115.6 – 204.4, Extremely heavy rain: 204.5 or more.



Spatial rainfall distribution: Isolated: <25%, A few: 26-50%, Many: 51-75%, Most: 76-100%
 Rainfall amount (mm): Heavy rain: 64.5 – 115.5, Very heavy rain: 115.6 – 204.4, Extremely heavy rain: 204.5 or more.